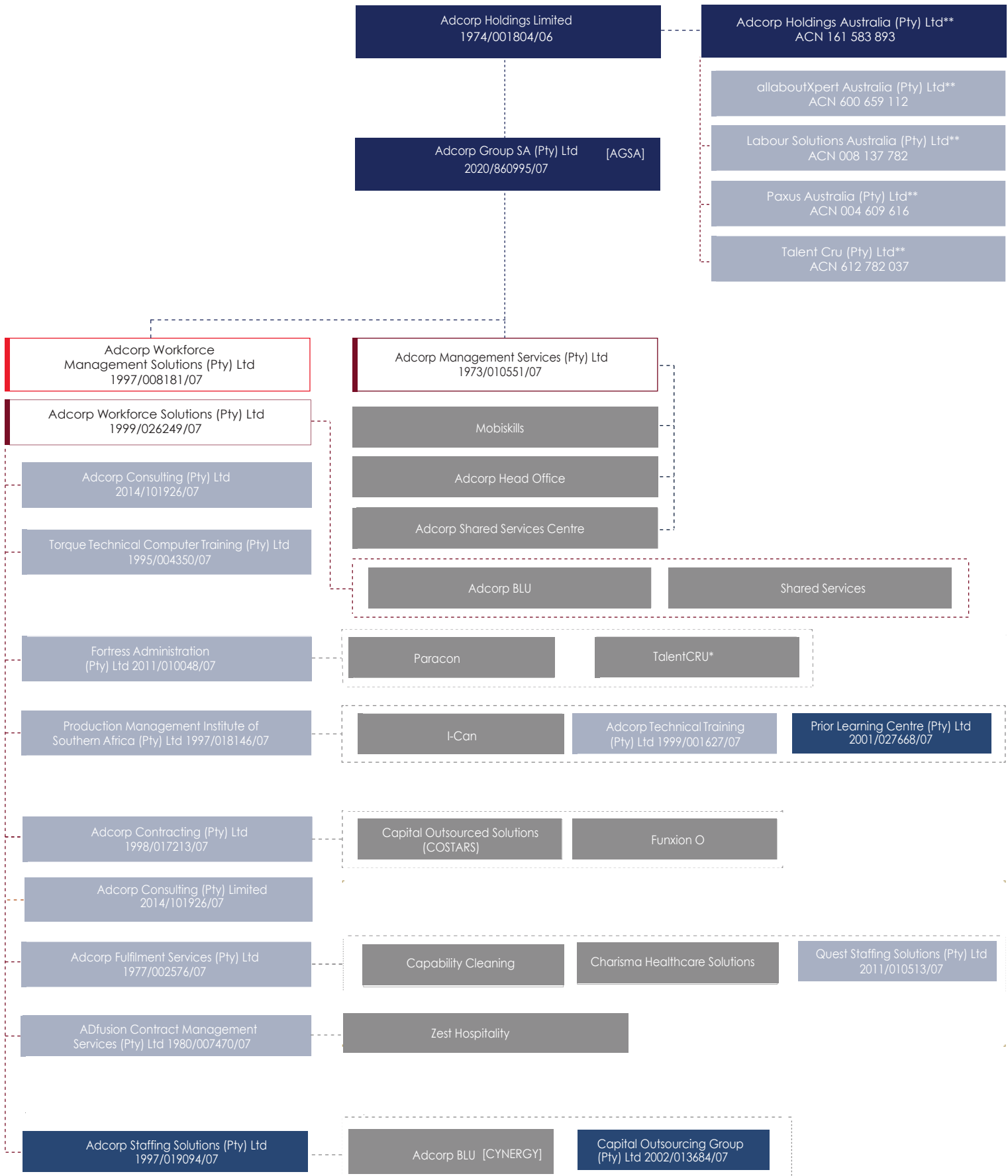


Simplified Group Structure



LEGEND

Unless otherwise indicated all entities are registered in South Africa

- * talentCRU comprises of previous divisions (DAV Professional Placement Group, Kelly Perm and The Personnel Concept)
- ** Registered in Australia
- Holding company
- Subsidiary
- Intermediary company
- Subsidiary of a subsidiary
- Division
- Dormant